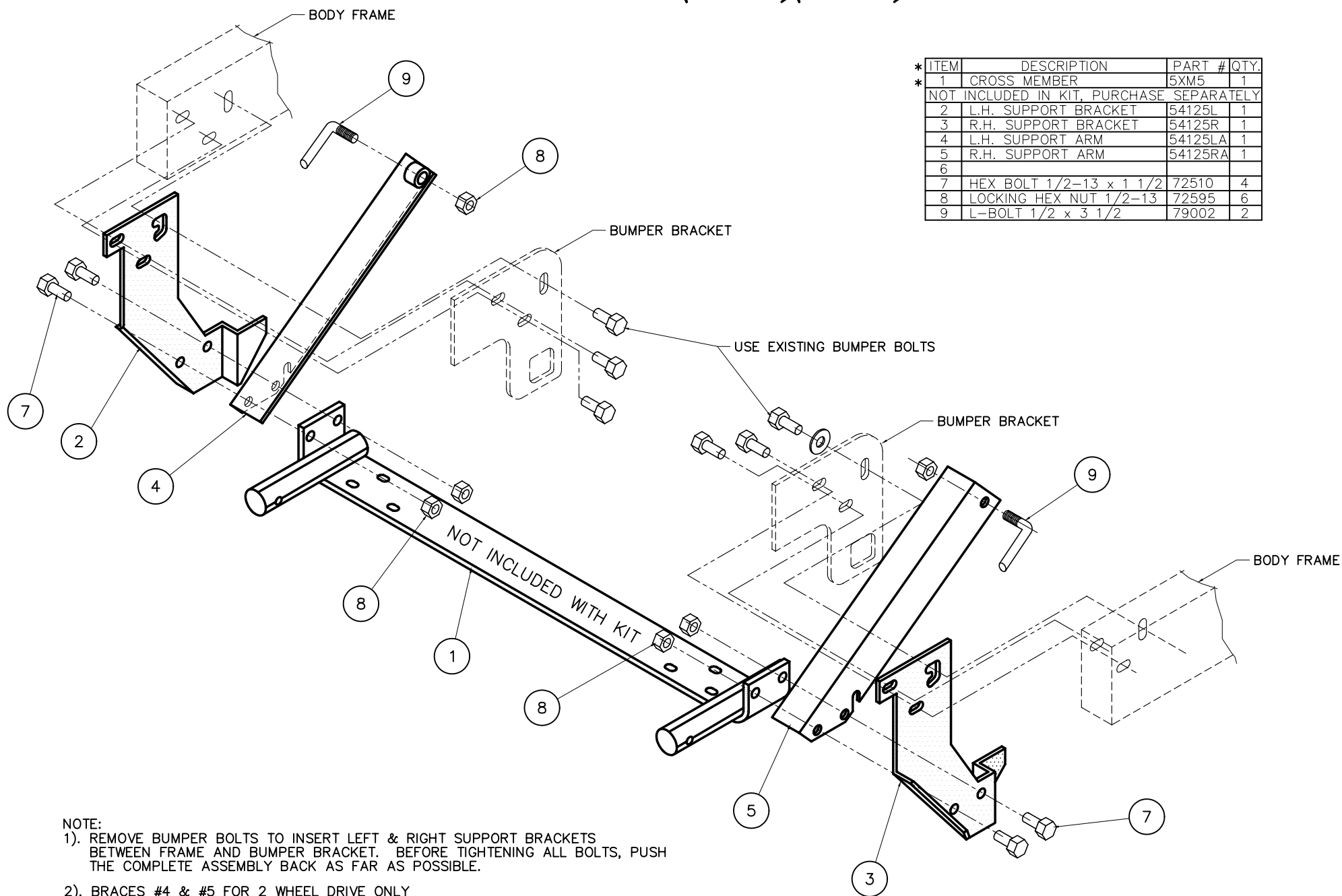


This custom kit is manufactured by Snowbear Limited to fit:
CHRYSLER DODGE DAKOTA MOUNT ASSEMBLY
(2 x 4)(4 x 4) YEAR 1987 to 1996



| * ITEM | DESCRIPTION | PART # | QTY. |
|------------------------------------------|-------------------------|---------|------|
| * 1 | CROSS MEMBER | 5XM5 | 1 |
| NOT INCLUDED IN KIT, PURCHASE SEPARATELY | | | |
| 2 | L.H. SUPPORT BRACKET | 54125L | 1 |
| 3 | R.H. SUPPORT BRACKET | 54125R | 1 |
| 4 | L.H. SUPPORT ARM | 54125LA | 1 |
| 5 | R.H. SUPPORT ARM | 54125RA | 1 |
| 6 | | | |
| 7 | HEX BOLT 1/2-13 x 1 1/2 | 72510 | 4 |
| 8 | LOCKING HEX NUT 1/2-13 | 72595 | 6 |
| 9 | L-BOLT 1/2 x 3 1/2 | 79002 | 2 |

NOTE:

- 1). REMOVE BUMPER BOLTS TO INSERT LEFT & RIGHT SUPPORT BRACKETS BETWEEN FRAME AND BUMPER BRACKET. BEFORE TIGHTENING ALL BOLTS, PUSH THE COMPLETE ASSEMBLY BACK AS FAR AS POSSIBLE.
- 2). BRACES #4 & #5 FOR 2 WHEEL DRIVE ONLY
- 3). SWAYBAR MUST BE REMOVED IF YOUR VEHICLE IS EQUIPPED WITH ONE.